

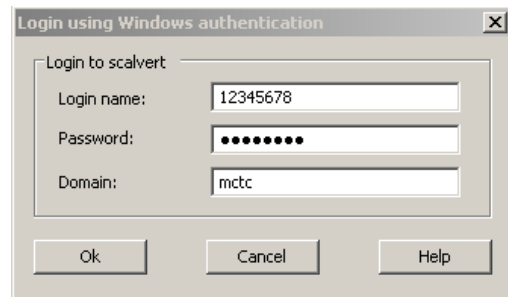
These tips should help you use Net Op effectively at MCC.

Logging in

Log in to Net Op before turning on the projector to avoid displaying your Banner ID.

After launching Net Op, you'll see this login window.

Log into Net Op using the 8 digits of your banner number, your NetID password, and the 'mctc' domain. Your login must correspond to the NetID used to log into the instructor's computer. If you didn't log into the instructor's computer yourself, log the PC off and log in again.



Net Op and projector use

Be mindful of what you're projecting on the screen. To discreetly check what you're students are doing, set the projector to some other device than the PC, such as the document camera, before you maximize the Net Op screen. Otherwise you run the risk of displaying a student's IM conversation to the entire class.

Controlling students' PCs

While monitoring a student's screen, both you and the student have control of the student's computer, unless you choose to lock the keyboard and mouse.

Demonstrating (broadcasting) the teacher desktop to students

Very Important: When you "pass the chalk" to a student, he or she has access to whatever network sites you have access to, such as your e-mail. This is not a good time to leave the room.

Whatever keystrokes or other actions you take on your computer will be reflected on the screens of the student(s) you selected.

Be careful not to allow the Net Op window to be broadcast to students' screens, as it contains your Banner number at the top as well as your students' Banner numbers. Minimizing the window immediately after setting up the broadcast should prevent this.

More detailed documentation is available online at

<http://www.mcc.commnet.edu/students/resources/distanceDocumentation.php#Netop>